

## HOW TO READ YOUR WATER METER

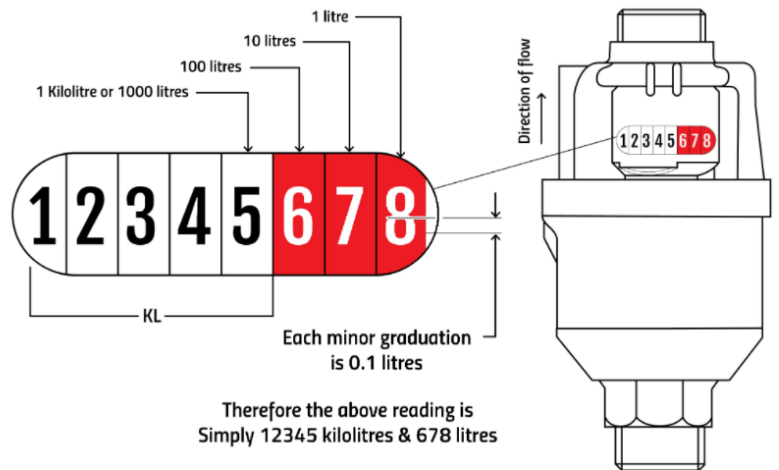
### Locating your water meter

A water meter will generally be located outside in the ground towards the front of a property. Most are at or below ground level and may have a metal or plastic lid covering the meter. Note that if you live in a unit block, there may not be an individual water meter for each residence.

### How to monitor water usage in between water notices

Weipa Town Authority uses both analog and smart water meters. Water meters measure how much water is used per property in metric. The following details will help you in reading your water meter.

**Analog** meters have black numbers on the left which represent kilolitres (kL), and is the unit of measurement the meter readers record as your meter reading. Note, the white numbers on the red dials represent litres and are not used for meter reading purposes.



**Smart** meters have numbers to the left and right of a decimal point. The numbers to the left of the decimal point are used for meter reading purposes.

