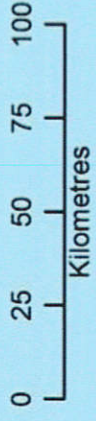
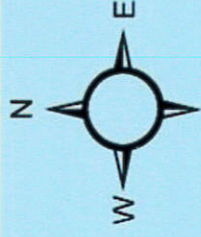
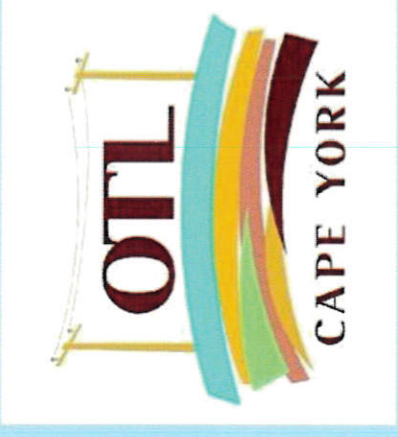


Seisia & Umagico & Injinoo
Bamaga & New Mapoon
Ok Village

THE OVERLAND TELEGRAPH TRACK

MOUNT SURPRISE TO THE TIP OF CAPE YORK

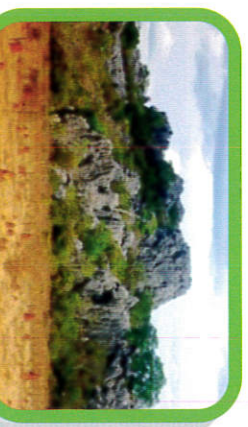


The Overland Telegraph Line (OTL)

The **Overland Telegraph Line (OTL)** starts at Mt Surprise and provides a direct link between the Cape York Journeys and the Savannah Way.

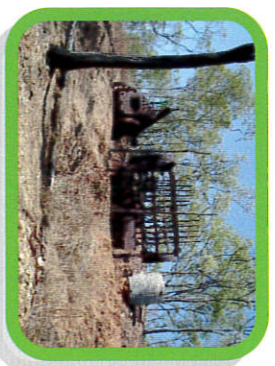
MOUNT SURPRISE TO FAIRVIEW

Visit the internationally renowned Undara Lava Tubes 36km to the east of the OTL and experience the unique flora and fauna of the micro-environment created by this geological wonder. Heading north the OTL follows the Savannah Way Alternate Route through Almaden.



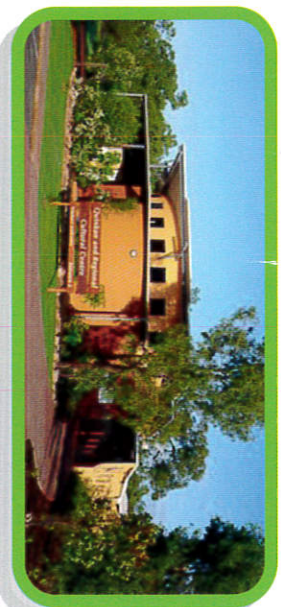
Travel north to arrive in Chillagoe where you can see the caves and explore the old mining centre. Attractions include the old smelter, fascinating caves and Aboriginal rock art, wildlife and fantastic photo opportunities. Call in to the Chillagoe Hub in town for all the information you require.

North of Chillagoe is Mungana, famous for the 'Mungana Affair' involving two Premiers of Queensland, Ted Theodore and William McCormack who both profited from the sale of mining properties to the Australian Government at inflated prices. The Red Dome Mine near Mungana is a source of high grade copper. The rock formations along the road are a photographer's delight.



Further north the Savannah Way Alternate Route branches off and heads west to Dunbar and ultimately around to Karumba. Watch for the signposts to Palmerville and Mount Mulgrave Stations and follow the OTL. Passing through Mount Mulgrave you reach Palmerville Station and from here it is possible to go east to Maytown.

Another 82 Km and you reach the junction of the OTL with the Peninsula Developmental Road (PDR) at Fairview. On the right at the junction is a small rest area with toilets. From here the OTL followed what is now the PDR. You should take the opportunity to linger in the Laura area, just 19 Km to the east and the centre of some of the best rock art in Australia.



Laura

FAIRVIEW TO BRAMWELL

Hann River Roadhouse is located on the Hann River where the fishing is good and there is a shady camp ground. The Roadhouse serves cold beer and good food. Immediately to the north and east you can access Lakefield, Queensland's second largest National Park.

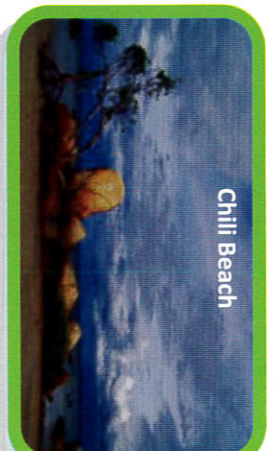


Lakefield

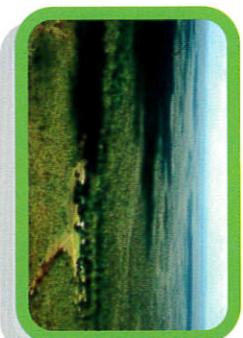
263Km north and you arrive at Musgrave Roadhouse, one of the overland transmitter stations on the OTL. Musgrave serves meals and fuel and has camping and cabin accommodation. From Musgrave you can drive west to Pormpuraaw, or head east to Lakefield National Park and Lotus Bird Lodge, or loop around to the north to see Port Stewart where there are limited camping sites.

Coen is a small town with hotel, cafe, general store, fuel and accommodation. Good camping sites can be found north of Coen on the river. North of Coen you pass by the Coen Quarantine Station and Information centre and the PDR then traverses the Oyala Thumotang National Park.

Archer River Roadhouse, famous for its hamburgers, is the next stop. Meals, fuel and camping are available. North of Archer is the turn off to the east to Lockhart River, Chili Beach, Iron Range National Park and Portland Roads. This location is famous for bird and butterfly watching, fishing and just relaxing; this is a beautiful part of the world.



Chili Beach



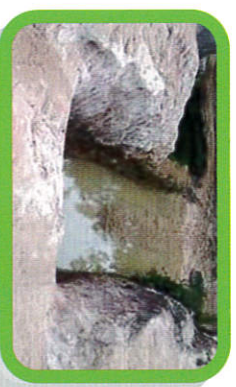
Further north the road divides, with the PDR heading to Weipa and what was the Overland Telegraph Line continuing north. Moreton Telegraph Station 72 Km from the turnoff is well worth a visit and a great place to stay. At Bramwell Junction meals, fuel, and a camping area are available. Travellers now have the choice to stay on the Bamaga Road or take the 4WD Old Telegraph Track (OTT) due north

BRAMWELL TO JARDINE

If you opt to take the Bamaga Road to the right you head into the Heathlands Ranger Station and experience the unique vegetation and landscapes as well as visit Captain Billy Landing.

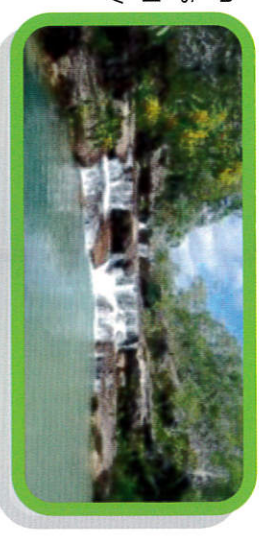


There are over 16 creek crossings along the 4WD section of the OTL. The Dulhunty River is a good place to camp with nice spots to cool off in the river just downstream of the crossing. Remnants of the overland Telegraph Line can still be seen along the track.

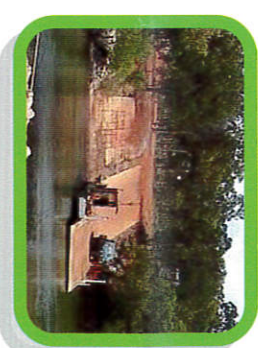


Gunshot Creek is the most notorious of the creek crossings and not for the faint hearted. Travellers have the option to bypass the experience. South of Gunshot is a bypass track to the east taking you out to the Heathlands area and then back on to the OTL north of Gunshot.

Cockatoo Creek crossing has a picnic area and enviro-toilet. Elliot and Twin Falls and Fruit Bat Falls are not to be missed and camping sites are available at Elliot/Twin Falls.



Jardine River ferry costs \$88 for the return trip and closes at 5pm. There is a small picnic area alongside the river. The service station sells fuel and souvenirs.



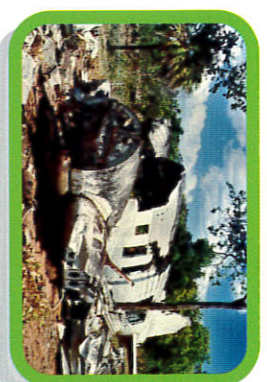
JARDINE RIVER TO PEAK POINT

Bamaga has good facilities with a supermarket mechanical services and accommodation, and is a timely place to stock up for the return trip. Stay a while however as there is a lot to see and do. The Northern Peninsula Area has many photo opportunities, fishing and fishing charters, helicopter rides, and bush walking tours.



Seisia Holiday Park and the Loyalty Beach Campground and Fishing Lodge are great places to unwind and relax. Or having eaten the dust all the way up the OTL, take a fast ferry ride over to Thursday Island. A bus tour coincides with the boat's arrival and will take the visitor to the key attractions such as the museum, Green Hill Fort, cultural centre and cemetery. Contact Seisia Holiday Park for details.

A 15 minute walk takes you over the headland to the most northerly tip of the Australian mainland. To the east you can visit the Somerset ruins, the site of the early government residence on Cape York established by Frank Jardine. There is a camp ground at Somerset Beach. To the west of the Tip is Punsand Bay near Peak Point which was the final mainland location of the OTL. Near Lock-
erbie ruins is the Croc Tent souvenir store.



See the WW11 relics near Bamaga Airport, the historic Jackey Jackey Airfield used as a northern airbase in WW11. Visit the WW11 relics around the Bamaga Airport and the wreck of the DC3. There is much to do in this region. Air and helicopter charters can be arranged from Seisia Holiday Park and fishing charters, walking and boat tours in Bamaga.